
Angela Colbers

- Angela is a valuable sparring partner given her in-depth knowledge and hands-on experience with pharmacokinetic research
- Her contribution to global research network makes her a role model as professional researcher
- She is always available for help
- She is a supervisor with a personal approach: Calm, sensitive and a great sense of humor.
- When we are stressing out, she puts things into perspective



Yvonne Engels



Practice what you preach: putting people first!

Debby Gerritsen

- She makes her PhD candidates feel worthy
- She inspires - both within our research field as within science in general
- She shows leadership and vulnerability



Nominated by:



Charlotte van Corven



Gerrie van Voorden



Inge Knippenberg

Thomas Hoogeboom

Emphatic

Energetic

Inspirational

Enthusiastic

Informal

Teampayer

Approachable

Resourceful

Supportive

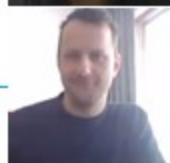
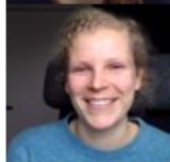
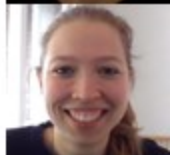
Involved

Humorous

Charismatic




Dennis Janssen

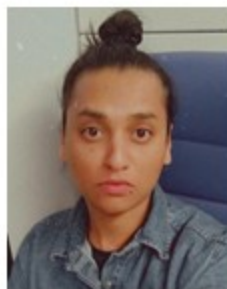


- He's available and reachable, always making the time to meet with PhDs.
- He's very supportive and is always trying to help his PhDs candidates.
- He's always positive, in a good mood, very relaxed and tells jokes.
- It's very nice to work with him.
- He feels the situations, he can also be quite serious and help us make important decisions.
- He cares about everyone in the department, always takes the initiative to organize presents for people who graduate or retire.
- He makes sure there's a good work atmosphere and that we have a good work-life balance.
- He likes to organize social activities and cares about team spirit.
- He's a good leader, always making people feel part of the group.

Marianne Jonker



How can I help Jo?



- Makes a strong effort for regular contact with very quick feedback and great communication.
- Empathetic and motivational.
- Very knowledgeable and we have had good productivity.

Ruud Leijendekkers

- Always available
- Multi-tasker (promotor, scientist, physiotherapist, father)
- Good know-how
- Able to promote his PhD students
- Overview over all projects concerning his topic



Geert Litjens

has the **golden combination** that a supervisor should have:

Leading expertise in his field

+

A keen eye for the personal aspects of
the (stressful) life of a PhD candidate



Maria van den Muijsenbergh

- Constructively critical
- Provides confidence
- Role model: inclusiveness



Marieke Seyger



- Her extreme enthusiasm motivates and keeps us going!
- Always available for questions (weekends or holidays are no exceptions).
- She collaborates with international groups, through which we are able to learn about worldwide research.
- Easily approachable and a true honor to work with. Ending up our weekly meetings not only with well thought answers to our outstanding questions, but also with a smile... not an exemption, but almost a rule!



Nominated by: Finola, Mirjam, Inge, Tessa, Juul and Marisol

Martijn Stommel

- Excellent in translating research results into clinical practice, thereby generating clinically relevant research
- Friendly, easy-to-approach supervisor
- Stimulates and encourages his PhD candidates to take on new endeavours in their projects in a non-pressuring way
- Takes good care of his PhDs and listens very carefully to what they need
- Good sense of humor!



Michiel Warlé



The most inspiring, involved and 'next level' supervisor!

Hans de Wilt

Endless enthusiasm
Passionate
Approachable
Efficient

Goal setting
Diversity
Team player
Pasta party's

