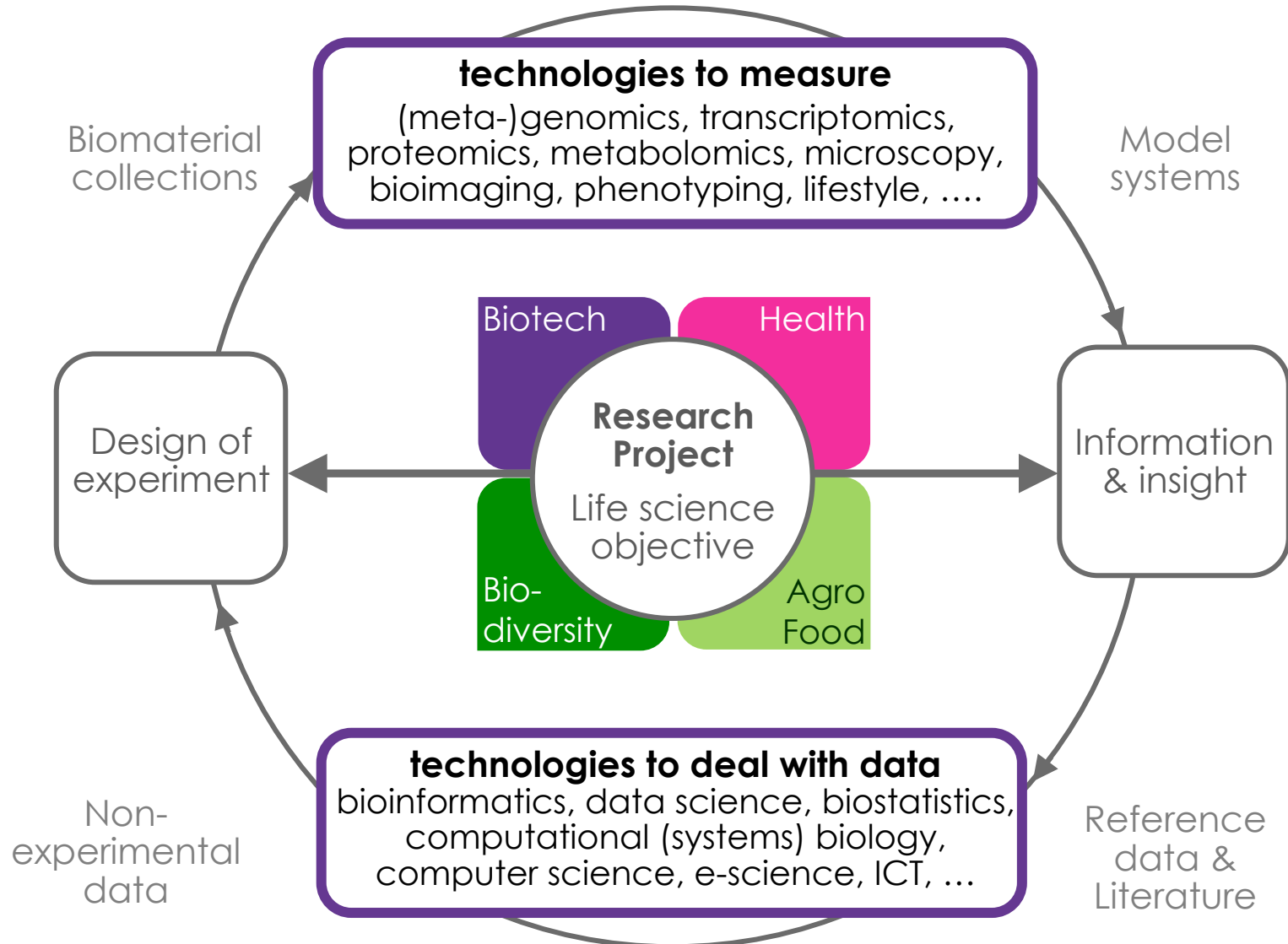
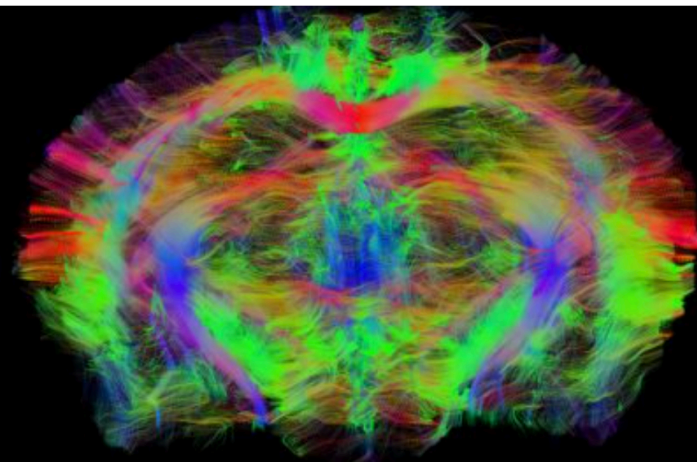


WHY DTL? ENABLING CROSS-DISCIPLINARY LS RESEARCH!



DTL is a public-private partnership of more than 50 Dutch life science organisations. It acts as a network of professionals that jointly improve the Dutch life science research infrastructure, with a focus on accessible high-end technologies, FAIR data treatment, and expert training.

[READ MORE](#)[JOIN DTL](#)

What are you looking for?



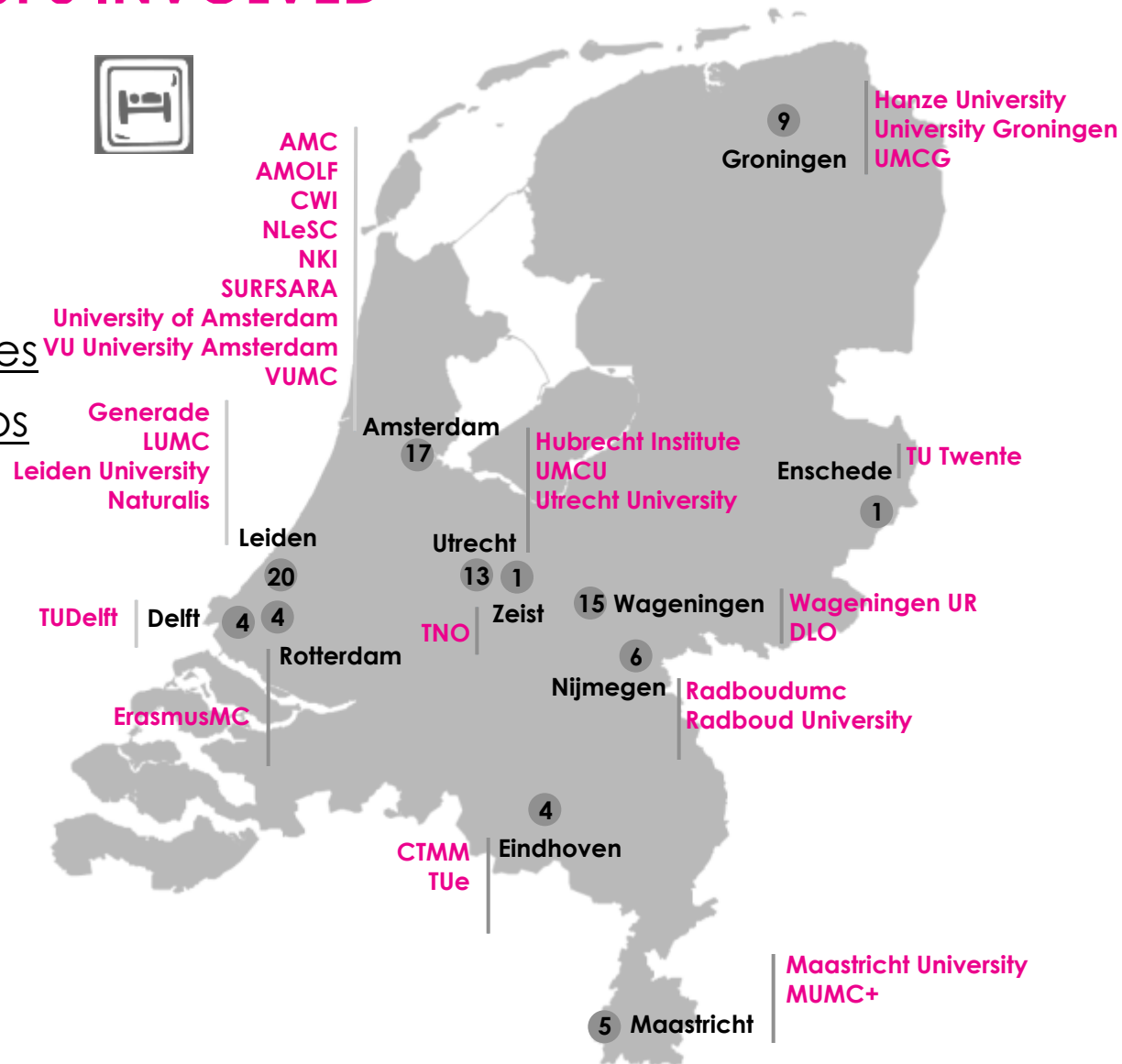
>130 EXPERT GROUPS INVOLVED

Technology & data 'hotels'

- Access to high-tech expertise & facilities
- Wetlab & data facilities
- Public and private labs
- Training & education

■ High-quality

- experimental design
- measuring
- data stewardship



4TH ETH CALL: 160 PROPOSALS, 60 JUST GOT SELECTED



€1.8M

Total budget

60+

Projects

€30k

Max per project

The DTL website lists 120+ Technology Hotels with expertise in:

Find your Technology Hotel at www.dtls.nl/eth



Genomics



Proteomics
Structural
biology



Metabolomics



Biomedical
Imaging
Medical imaging



Bioinformatics
Systems biology

Public-public
projects



Hotel guest



Public applicant. Main
applicant is a researcher
at a Dutch public research
organisation (PhD S8y)



No industry involved,
no matching required

Public hotel



Research institutes



Universities



University
medical
centres

Public-private
projects



Hotel guest



Public applicant. Main
applicant is a researcher
at a Dutch public
research organisation



Industry involved as
co-applicant or Hotel,
10% matching in cash
and/or kind

Public or private hotel



Research
institutes



Universities



University
medical
centres



Industry

COURSES, WORKSHOPS, FOCUS MEETINGS, HACKATHONS,

...

■ Interest/Working Group meetings

- Connecting virtual research environments and large scale computer resources (DTL/SURF SIG)
- Dutch Galaxy working group: national agenda towards Galaxy infrastructure and training

- Science goes FAIR @ Health-RI 2017

■ Focus meetings: shaping solutions around a common challenge

- Creating a Bioinformatics and Data Stewardship Service Center
- FAIR Tooling



NL-NODE IN ELIXIR ('DATA FOR LIFE')

ELIXIR-NL Areas

Data Interoperability

e-Infrastructure
services

Training & Education

NL data resources

Cross-RI collaboration

- ESFRI-NL
- e-Infra's (via SURF)

Industry involvement



ELIXIR links data ...

Expertise

Resources
(databases)

Compute & storage

Tools

Standards

Training

SCIENTIFIC DATA MUST BE FAIR

2014

Findable

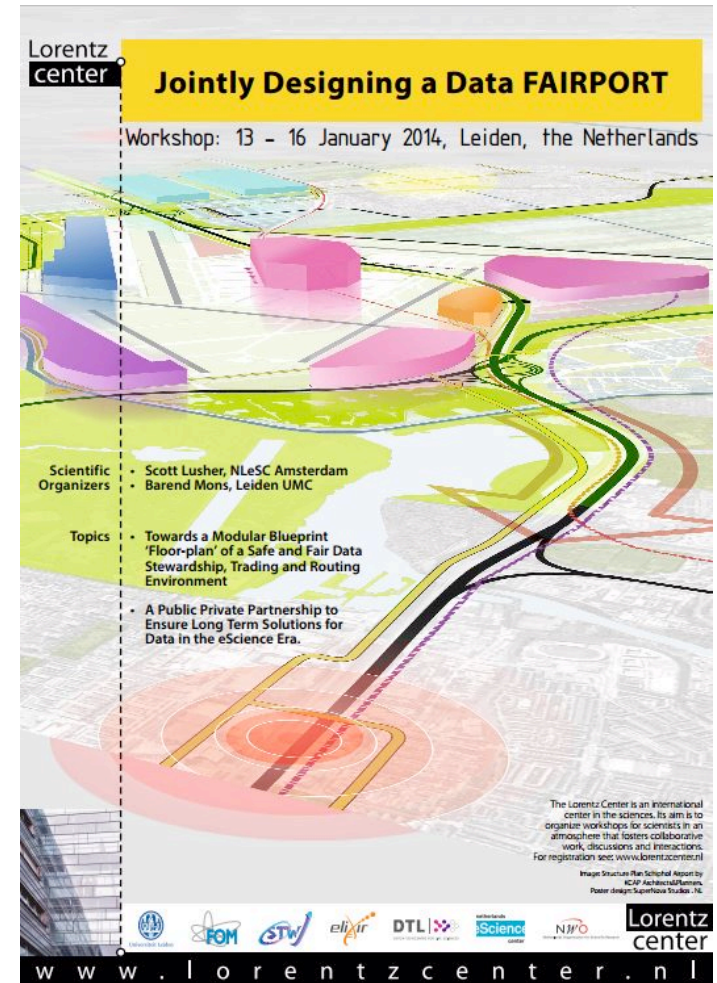
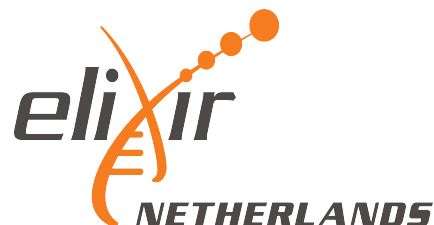
Accessible*

Interoperable

Re-usable

..... for both people and computers

*) NB: accessible \neq open!
(e.g. proprietary data, privacy-sensitive data)



FAIR DATA PRINCIPLES PUBLISHED

March
2016



RESEARCH & INNOVATION

Open Science

[European Commission](#) > [Research & Innovation](#) > [Open Science](#) > [European Open Science Cloud](#)

[Home](#)[Open Access](#)[European Open Science Cloud](#)

European Open Science Cloud

EU High Level Expert Group - European Open Science Cloud

The European Open Science Cloud (EOSC) is envisaged as a stakeholder-driven infrastructure servicing science and innovation. More than a data repository, it will comprise technical elements of connectivity, hardware, repositories, data formats and API's and it will offer access to a wide range of user-oriented services, data-management, associated HPC analytics environments, stewardship services and, notably, expertise. The EOSC is envisaged as a publicly governed endeavor, but given the scale foreseen and the need for long-term sustainability, parts of it will be realized in collaboration with the industry. High performance analytics environments and services may or may not be part of the EOSC, but will largely develop on top of well-defined and stable EOSC APIs.

Publications

- [Background paper on the Public Consultation "Science 2.0: Science in transition"](#)  134 KB
- [Final report on the Public Consultation "Science 2.0: Science in transition"](#)  633 KB
- [Open Science in 2030](#)  937 KB
- [Salmi, J., Study on Science 2.0, \(July 2015\)](#)  1.1 MB

The Personal Health Train



Personalized Medicine & Health Research Infrastructure



LET'S BOOST CROSS-DISCIPLINARY LS RESEARCH TOGETHER!

