



Program

Wednesday 15 May

Welcome by organisation

12.40

Harold Schmidt

12.45-13.00

Welcome

Biologist in Blijdorp, Rotterdam

Mechanobiology of Cell Migration

Keynote Anna Akhmanova

13.00-14.00

Control of cell morphology and migration by dynamic microtubules

Cell Biology, Faculty of Science, Utrecht University, The Netherlands

Carsten Grashoff

14.00-14.30

Piconewton-sensitive biosensors to investigate adhesion mechanics in cells

Max Planck Institute of Biochemistry

Xavier Trepas

14.30-15.00

Mechanobiology of epithelial migration, growth and folding

ICREA @ Institute for Bioengineering of Catalonia (IBEC), Barcelona, Spain

Barcelona Institute for Science and Technology (BIST), Barcelona, Spain

Short break

Break 30'

2 short talks 10'+5'

15.30-16.00

Martin Schwarz

16.00-16.30

Force transmission and mechanotransduction through integrins

Yale Cardiovascular Research Center

Stephan Huvneers

16.30-17.00

Sensing of forces by (a)symmetric endothelial junctions for angiogenesis

Amsterdam Medical Centre, University of Amsterdam, The Netherlands

Short break

Break 30'

Ben Fabry **17.30-18.00**
Homing mechanisms of natural killer cells in cancer
Center for Medical Physics and Technology, Germany

Matthieu Piel **18.00-18.30**
Cellular branching and nuclear deformation during fast immune cell migration through dense tissues
Science Institut Curie, Paris, France

Thursday 16 May

Targeting Cancer, Cancer Invasion Metastasis, Cell Biology Focus

Keynote Jacco van Rheenen **9.00-10.00**
Intravital microscopy revealed cancer stem cell plasticity to be important for metastasis
Department of Molecular Pathology, Oncode Institute, Netherlands Cancer Institute
Amsterdam, the Netherlands

Andrew Ewald **10.00-10.30**
E-cadherin is an invasion suppressor, survival factor, and metastasis promoter across multiple models of breast cancer
Johns Hopkins University School of Medicine, Baltimore, USA

Short break Break 30'

Danijela Matic Vignjevic **11.00-11.30**
The dark side of fibroblast force
Institut Curie, UMR144, PSL, Paris, France

2 short talks 10'+5' 11.30-12.00

Flash talks 12.00-12.10

Lunch & posters 12.10-15.00

Fanny Jaulin **15.00-15.30**
Morphogenetic programs in colorectal carcinomas dissemination
Institut de Cancérologie Gustave Roussy, Villejuif, France

2 short talks 10'+5' 15.30-16.00

Sussan Nourshargh **16.00-16.30**
Neutrophil breaching of venular walls: Mode, dynamics & mechanisms
William Harvey Research Institute, Barts and The London Medical School,
Queen Mary University of London, UK

Break Break 30'

2 short talks 10'+5' 17.00-17.30

Michael Dustin **17.30-18.00**
How human CD8 memory T cells outcompete naïve counterparts

Kennedy Institute of Rheumatology, University of Oxford, UK

Walk through the Zoo 18.00 -19.00
Dinner and Party 19.00

Friday 17 may

Mechanobiology of Cell migration Specialized Adhesion Structures: Podosomes, Invadosomes

Keynote Reinhold Förster EMS sponsored



9.00-10.00

CCR7 and its ligands: controlling cells cell migration between and within lymphoid and non-lymphoid organs

Institute for Immunology, Hanover Medical School, Hanover, Germany

Stefan Linder

10.00-10.30

Regulation and analysis of actomyosin-dependent contractility at macrophage podosomes

University Medical Center Eppendorf, Hamburg, Germany

Short break

Break 15'

Louis Hodgson

10.45-11.15

New Windows on Living Cells: Spatiotemporal dynamics of Rho GTP-ases regulate cancer invasion

Albert Einstein College of Medicine, New York, USA, Michael F. Price Center, New York, USA

Short talk

11.15-11.30

Koen van den Dries

11.30-12.00

Functional alliance between actin, myosin and septins at protrusive podosomes

Radboudumc, Nijmegen, The Netherlands

Flash talks

12.00-12.10

Lunch + posters

12.10-15.00

Inflammation

Anna Huttenlocher

15.00-15.30

Imaging inflammation and its resolution

University of Wisconsin school of medicine and public health, Madison, USA

Steven Pals

15.30-16.00

Provoking homelessness as strategy to treat lymphoma

Department of Pathology, Amsterdam University Medical Centers, and Lymphoma and Myeloma Center Amsterdam – LYMMCARE, Amsterdam, The Netherlands.

2 short talks 10'+5'

16.00-16.30

Break

Break 30'

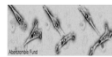
Tim Lämmermann **17.00-17.30**
Interstitial migration modes of tissue-resident immune cells
Max Planck Institute of Immunobiology and Epigenetics (MPI-IE), Freiburg, Germany

2 short talks 10'+5' 17.30-18.00

Paul Kubes **18.00-18.30**
Cavity macrophage: Immunity around organs
University of Calgary, Calgary, USA

Saturday 18 May

Targeting Inflammation and Cancer



Abercrombie sponsored keynote Jason Cyster **9.00-10.00**
Molecular cues controlling cell migration during the B cell response
HHMI and University of California, San Francisco, USA

Kairbaan Hodivala-Dilke **10.00-10.30**
Cancer stroma modifications and the control of cancer growth
Barts Cancer Institute, Queen Mary University of London, UK

Break Break 30'

Immuno Therapy

Philippe Bousso **11.00-11.30**
Decoding the mechanisms of tumor immunosurveillance and immunotherapies at the single cell level
Institut Pasteur, Paris, France

Edna Cukierman  **EMS sponsored** **11.30-12.00**
Oncogenic synapses; stromal regulators of PDAC metabolic support and innate immunosuppression
Marvin & Concetta Greenberg Pancreatic Cancer Institute, Immune Monitoring Facility
Fox Chase Cancer Center, Philadelphia, USA

 **Dutch Society for Cell Biology** sponsored Poster Award & Closing 12.30

Lunch 12.45